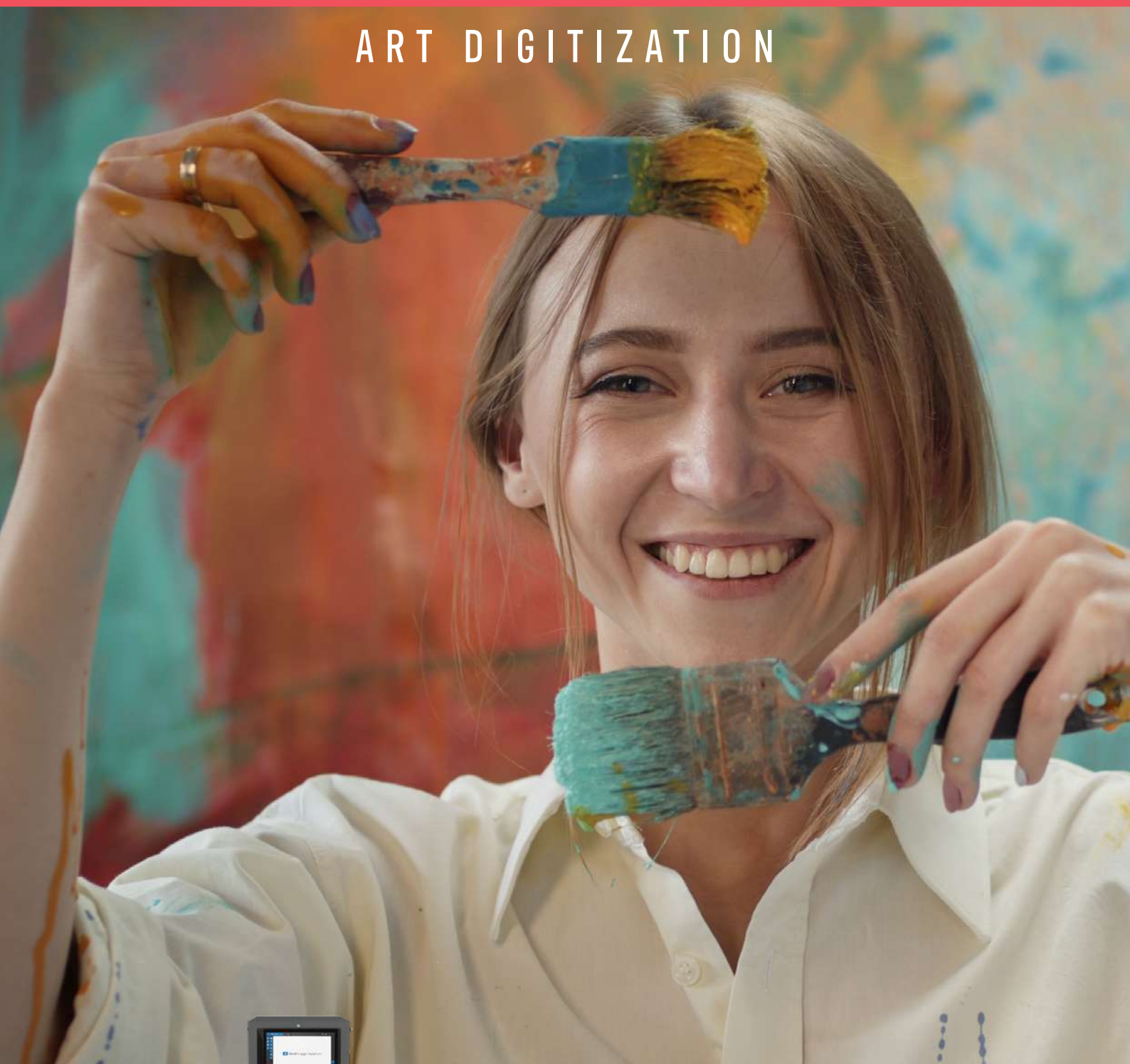


# HD Apeiron/42

CONTACT-FREE SCANNER

ART DIGITIZATION



 **contex**<sup>®</sup>  
WHEN IMAGING MATTERS

# DISCOVER THE FUTURE OF ART DIGITIZATION

**A new era in art digitization has begun with the introduction of HD Apeiron/42, the latest innovation from Contex.**

This cutting-edge contact-free large format art scanner is designed to revolutionize the way you capture, preserve, and showcase art. With unparalleled technology and precision, HD Apeiron/42 sets a new standard for lifelike results, making it the ultimate choice for museums, galleries, copy shops, and art enthusiasts worldwide.



## Unparalleled compliance

We designed HD Apeiron/42 to match high level specifications for exceptional color reproduction and digitalization.

## HD Apeiron/42

- Complies with FADGI\*\*\*\* (4 stars) - defined as the best imaging practical today
- Complies with ISO 19264-1 - applies to scanners and digital cameras used for digitization of cultural heritage material
- Produces a color rendering index (CRI) above 98
- Is Energy Star 3.0 certified like all other Contex large format scanners
- Radiates no UV/IR from the natural daylight spectrum light
- Uses ICC Color Management made with X-Rite® color profiling in the included Nextimage Apeiron software

**Contact us for a live demonstration:**  
[contex.com/contact](http://contex.com/contact)



## About Contex

Delivering world-class scanners to over 100 countries, Contex solutions are recognized by a wide range of industries for reliability, high performance and superb image quality.

We have earned our reputation as the market leader by developing state-of-the-art technology and software since 1923, and this position constantly inspires us to improve our business practices, products and services.

**Let us help you digitize your fine art for the future.**

**Additional quality**

# PRESERVATION PERFECTED

---

**HD Apeiron/42 is more than a scanner; it's an assurance of flawless preservation.**

Museums can now safeguard their treasures with a technology that respects and protects. Museum shops and copy shops can ensure that the art they reproduce maintains its original details, whether for sale or archival purposes.

Among many other types of originals, HD Apeiron/42 is suitable for:

- Fine art
- Artwork
- Artifacts
- Posters and prints
- Interior design materials
- Textiles
- Delicate documents

---

**HD** Apeiron/42

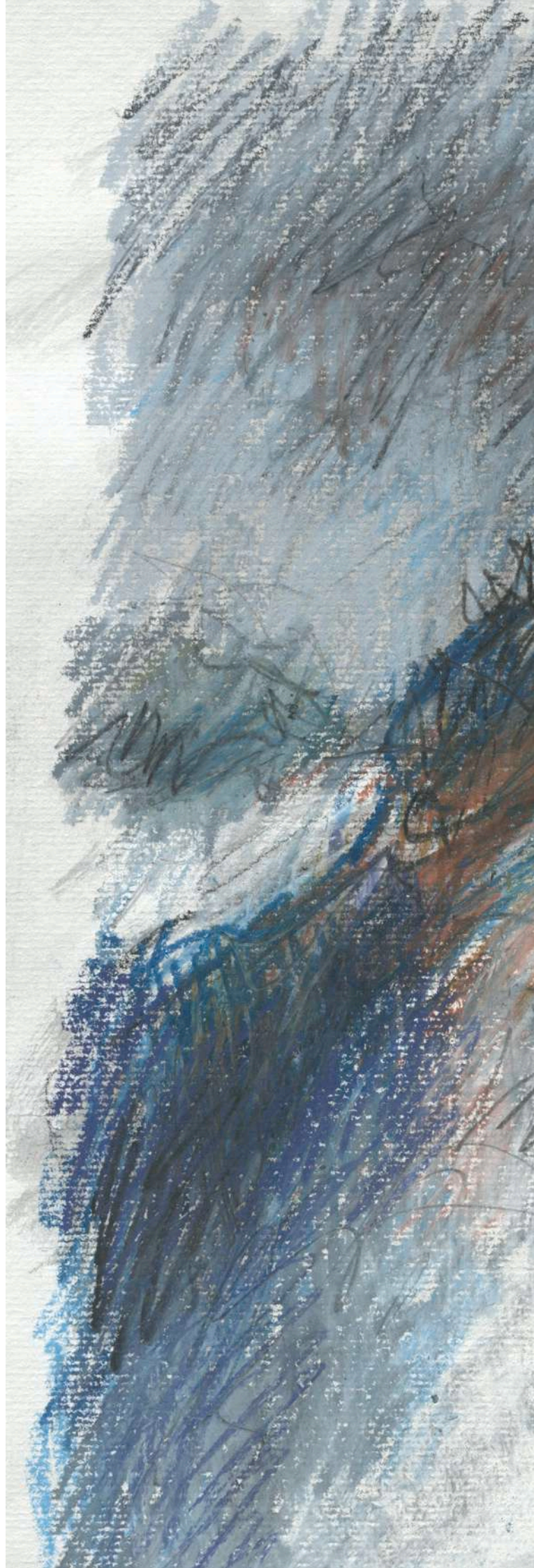
## **The sandburied church**

Oil pastels, charcoal and pencil on paper.

### **Scanning details**

- Quality (multiple exposures)
- 600 dpi
- Both lamps down
- 3D effect at +100

**Explore HD Apeiron/42 demo room:**  
[contex.com/HDA-demo-room](http://contex.com/HDA-demo-room)





### **Multiple exposure scanning**

Scanning originals with the 'Quality' option enabled reduces image noise and enhances the color accuracy. The unique option utilizes a multi-exposure technique which ensures compliance with FADGI\*\*\*\* (4 stars) and ISO 19264-1 quality standards.

**Lifelike surfaces**

# UNRIVALED IMAGE QUALITY

**HD Apeiron/42 boasts the market's most lifelike results, offering a level of image quality that surpasses all others.**

HD Apeiron/42's contact-free scanning process with full light control and no UV/IR radiation makes it the first choice when your job is to safely scan large format fine art, delicate documents, and artwork without the risk of wear and tear.

Or when you need to emphasize the unique surface details of building materials and textiles, for example, online or in print.

Colors are precisely captured and rendered with an ICC color management profile powered by X-Rite® and the color rendering index (CRI) is above 98, an industry "excellent" value.

## **HD** Apeiron/42

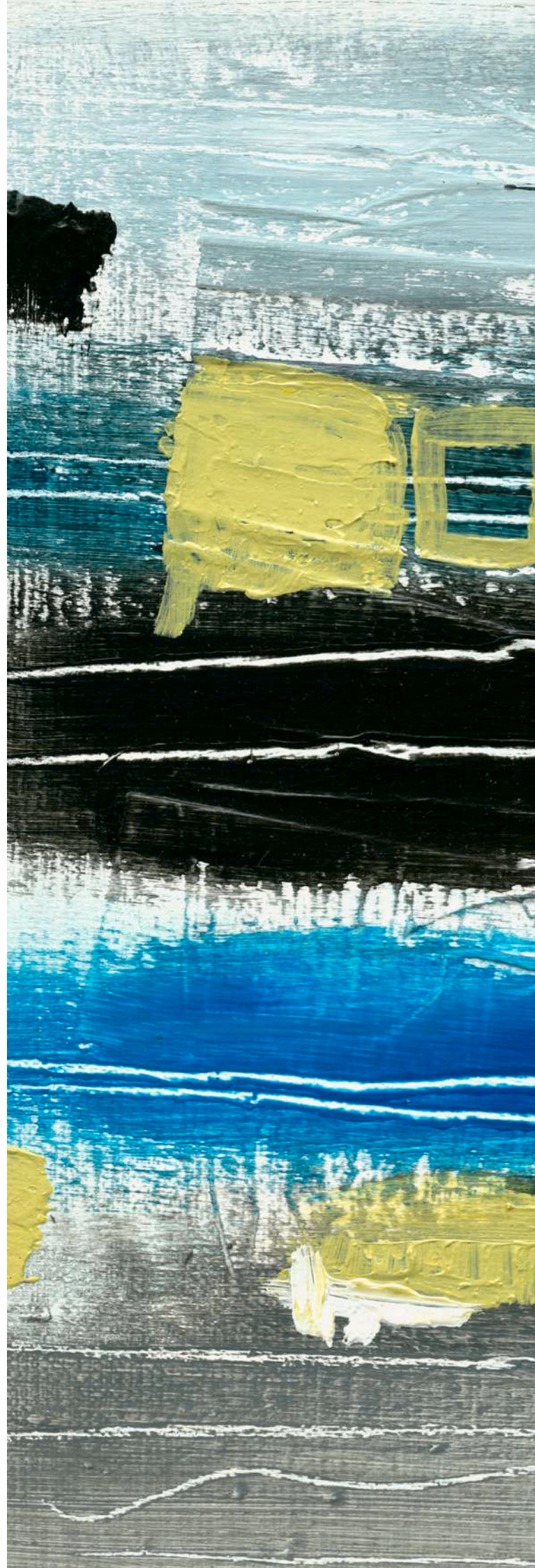
### **Blue-yellow painting**

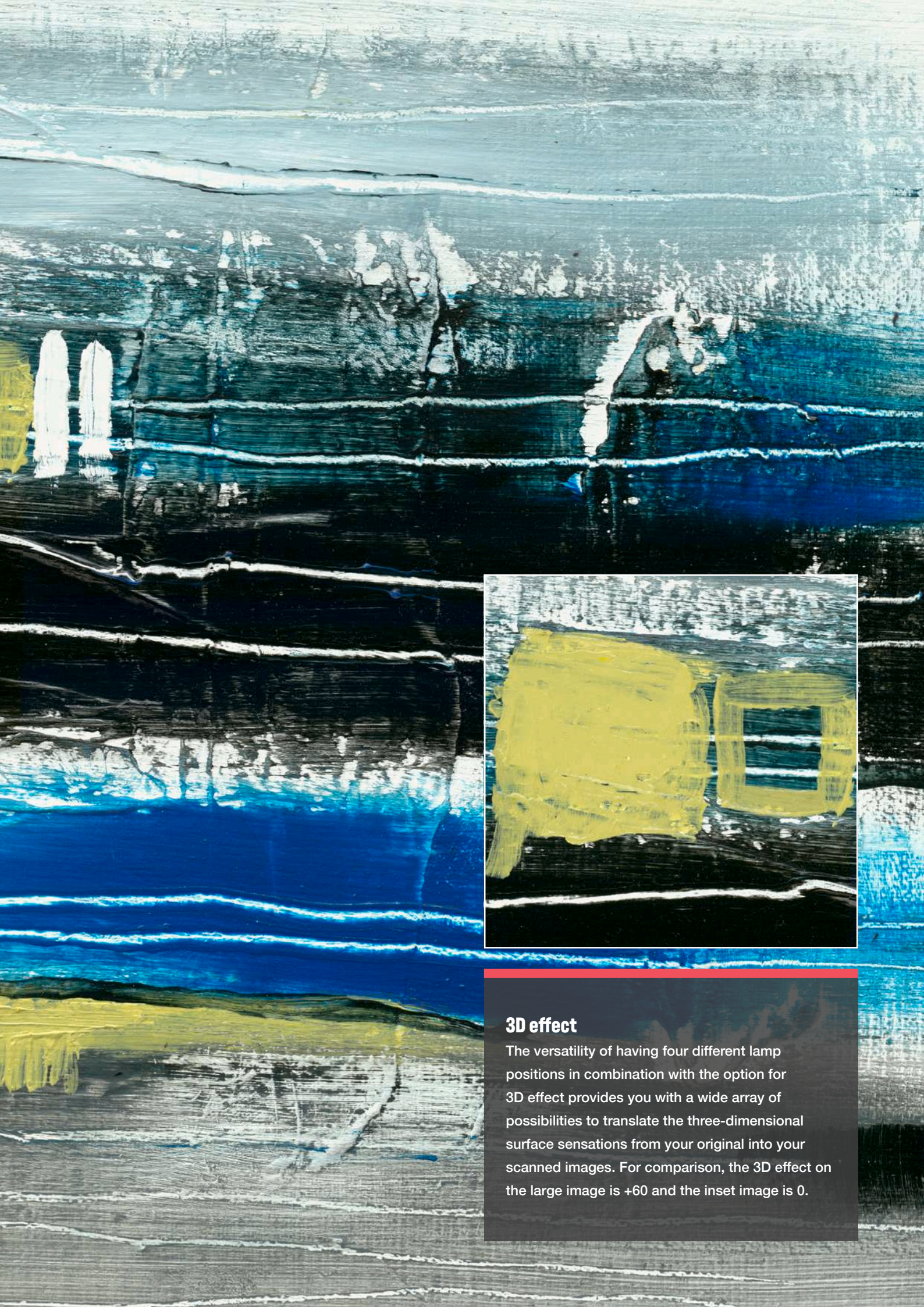
Acrylic on canvas.

#### **Scanning details**

- Quality (multiple exposures)
- 600 dpi
- Both lamps down
- 3D effect at +60

**Explore HD Apeiron/42 demo room:**  
[contex.com/HDA-demo-room](http://contex.com/HDA-demo-room)





### 3D effect

The versatility of having four different lamp positions in combination with the option for 3D effect provides you with a wide array of possibilities to translate the three-dimensional surface sensations from your original into your scanned images. For comparison, the 3D effect on the large image is +60 and the inset image is 0.

Large format originals

# SEAMLESS STITCHING

**World's No. 1 in calibration and stitching.**

Featuring six quad-linear Fujifilm lenses and Toshiba color CCDs, this scanner achieves an optical resolution of up to 1200 dpi.

Our patent-pending laser-controlled camera adjustment and motorized focus adjustment ensure pinpoint precision and seamless stitching across all cameras. Any height differences in the surface of the original is no problem.

## **HD** Apeiron/42

### **1988 hairdo**

Fineliner on paper.

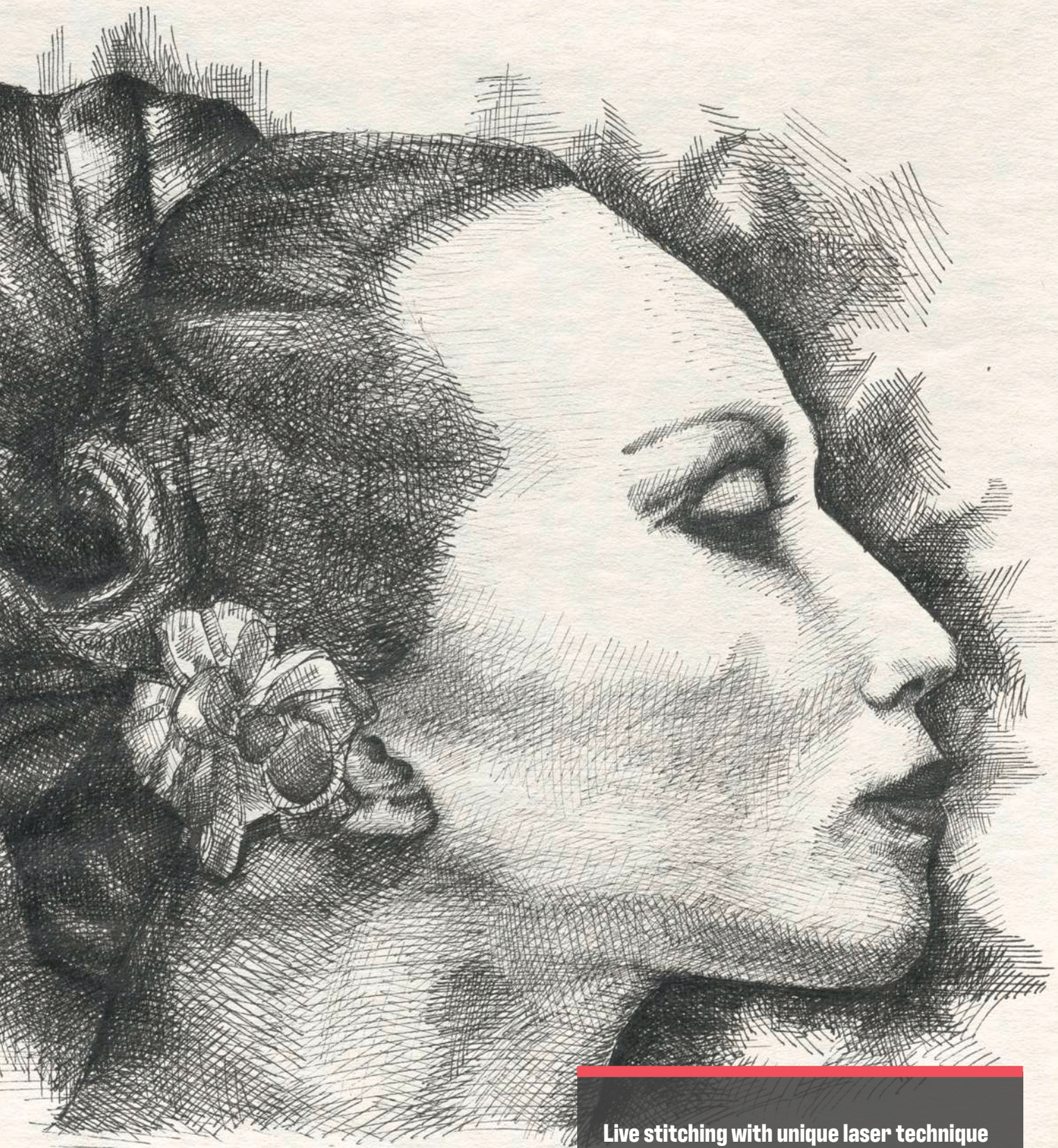
### **Scanning details**

- 600 dpi
- Both lamps down
- 3D effect at +100

Explore HD Apeiron/42 demo room:  
[contex.com/HDA-demo-room](http://contex.com/HDA-demo-room)





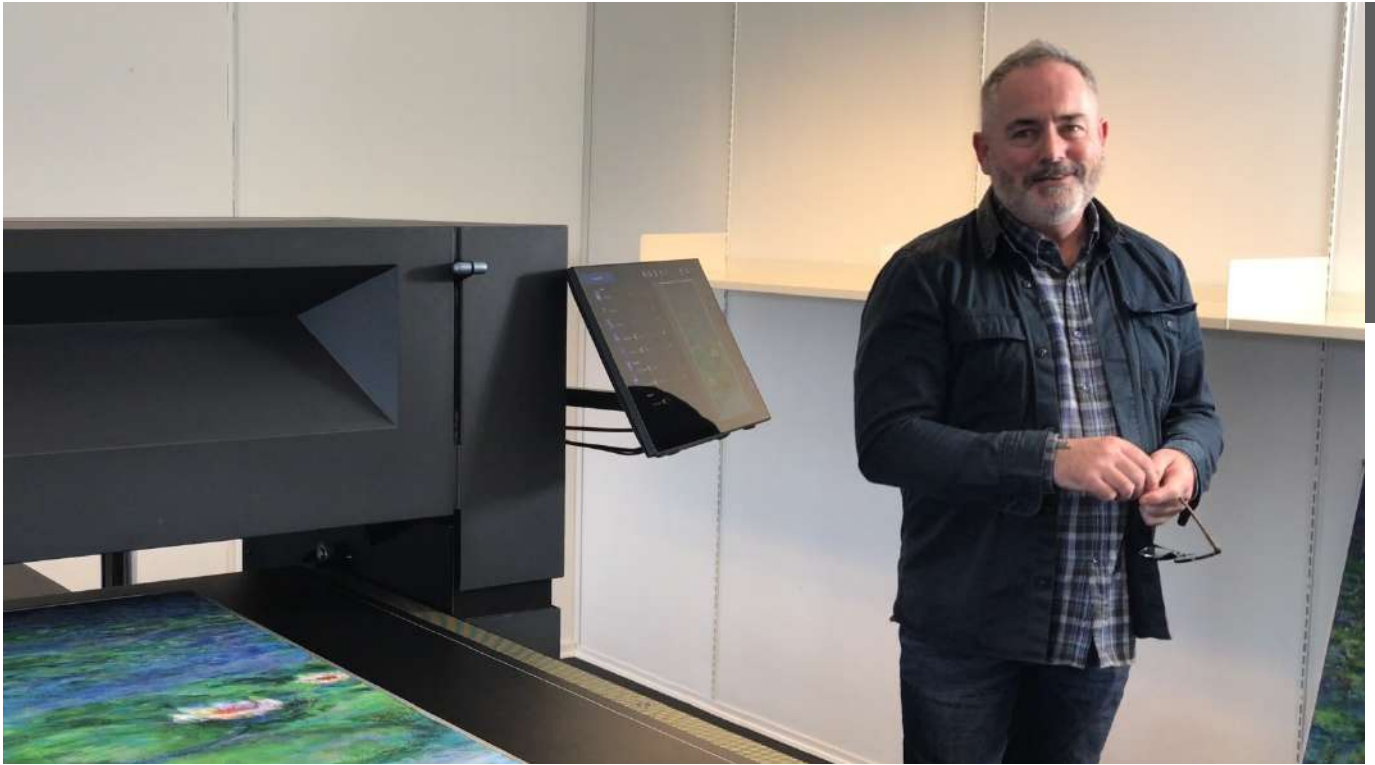


### **Live stitching with unique laser technique**

Contex' ever-present and well-known calibration and stitching expertise is taken to a new level with HD Apeiron/42. The live-stitching of the six cameras use five FDA approved lasers to ensure a 100% correct stitching result. The cameras consist of Fujifilm lenses and quad-linear Toshiba color CCDs.

## Case study

# Revolutionizing workflow and color accuracy in art reproduction



**“The ability to do this in the presence of a customer, it will just blow them away.”**

*John Rush, Owner  
Rush Digital Printing*

**“It will save us hours, if not days,” was the conclusion from John Rush, owner of Rush Digital Printing in Belfast, Northern Ireland.**

John Rush visited Contex to see the HD Apeiron/42 contact free art scanner first-hand and to learn if it would be useful for his business with reproduction of fine art.

### **Improved workflow will save time**

The current workflow of Rush Digital Printing does not involve the customer in the production process, which can make every feedback step a long wait and eventually prolong the delivery.

With HD Apeiron/42 in the shop, John Rush sees a possibility for a

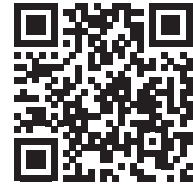
much-improved workflow that more likely will get it right the first time. This includes letting the artist be a part of the scanning process.

“From the samples we have run through today, we looked at a watercolor in great detail and just a straightforward scan with HD Apeiron without any kind of adjustment or any kind of workarounds has given us a quality in reproduction that we just can’t get near at the minute,” says John Rush.

### **Reproducing special colors**

A close match between original and copy is the key to success in the fine art reproduction business.

His own background in photography has left John Rush with the same



### Challenged by a slow workflow

Color accuracy is a paramount concern for John Rush from Rush Digital Printing, and he is constantly seeking ways to enhance the precision and efficiency of his current workflow.

### Searching for an alternative

John Rush visited Contex in Denmark to test if the HD Apeiron/42 contact-free art scanner would meet the demands of a busy fine art printing business.

### Would recommend

Based on his hands-on experience and the positive outcomes observed during the demonstration, John Rush expresses no hesitation in recommending HD Apeiron/42.

knowledge and feel of color accuracy as any artist:

“Can we give the artists 100% color accuracy at the minute? I don’t think we can. But we can get them very close. I think the Apeiron gets us much closer.”

The 3D effect will let them finetune the detail of the texture in real time.

“The ability to do this in the presence of a customer, it will just blow them away,” exclaims John Rush.

### How the scanner ensures correct color printing

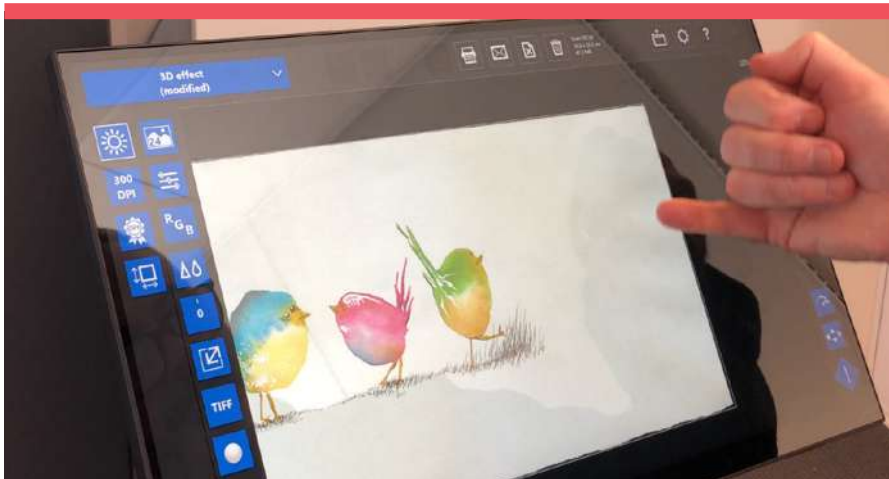
The software for HD Apeiron/42, Nextimage Apeiron, includes a closed loop calibration (CLC), a Contex technology that matches the scanned image with any paper on any printer.

“The ability to create [CLC] profiles with the scanner and have those profiles built into the scanner is really, really attractive for us,” says John Rush.

### Unrivalled image quality

HD Apeiron/42 art scanner has lots of potential to speed up any existing workflow while continuously ensuring a perfect color match.

“It would streamline our entire workflow and save us hours, if not days. But mostly it will improve our detail and ultimately the product that we put out at the other end is going to be improved,” clarifies John Rush.



Experiencing the hands-on test scanings, John Rush could see how the HD Apeiron/42 scanner and software instantly solves problems that they currently work very hard to solve: “As I see each each scan go through, layers of previous stress and and trauma or are falling away.”



**RUSH DIGITAL PRINTING**  
GICLÉE FINE ART & PHOTO PRINTING

### Rush digital printing

Northern Ireland’s only Hahnemühle certified fine art print studio with over 25 years of expertise in digital imaging and photography. The company excels in artwork scanning, Giclée printing, gallery exhibition printing and fine art reproduction.

## Digitized originals

# FINE ART AND ARTWORK

HD Apeiron/42 is suitable for scanning many types of fine art and artwork types:

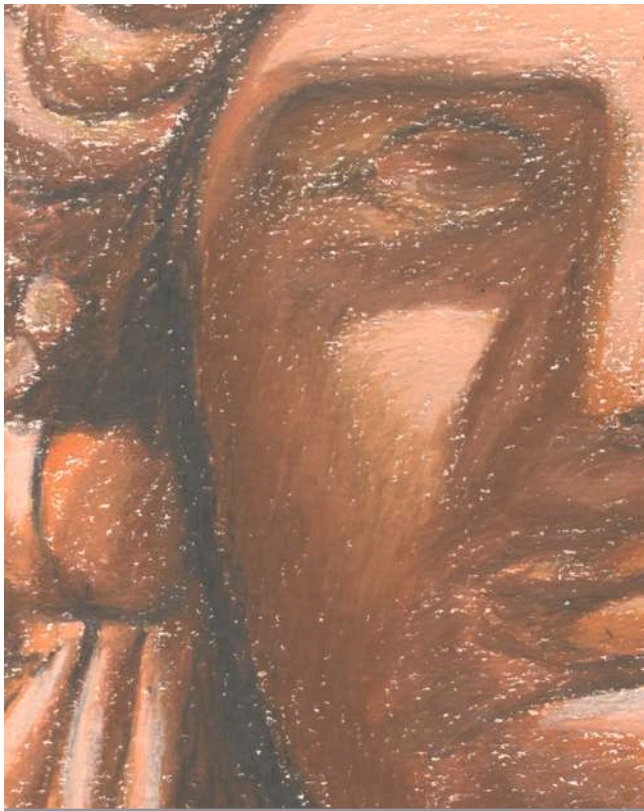
- Oil
- Acrylic
- Pencil
- Pen
- Charcoal
- Gouache
- Watercolor
- Hot wax (encaustic)
- Spray
- Collages
- Mixed media



Water color on paper.

### Scanning details

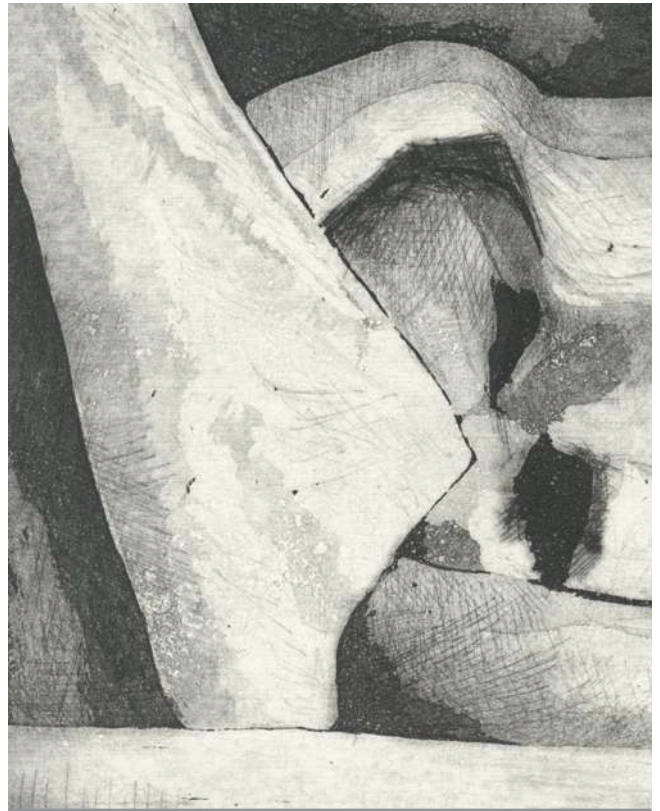
- Quality (multiple exposures)
- 1200 dpi
- Both lamps down
- 3D effect at +100



Oil pastels on paper.

### Scanning details

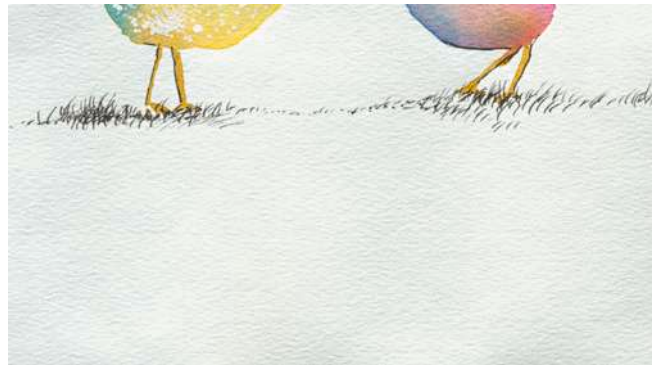
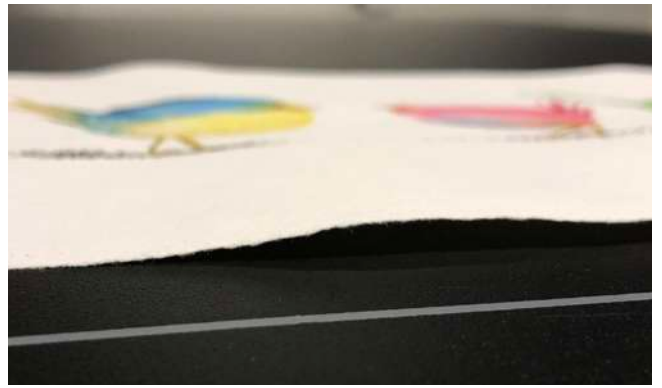
- 600 dpi
- Both lamps down
- 3D effect at +100



One-color etching.

### Scanning details

- 600 dpi
- Both lamps down
- 3D effect at +60

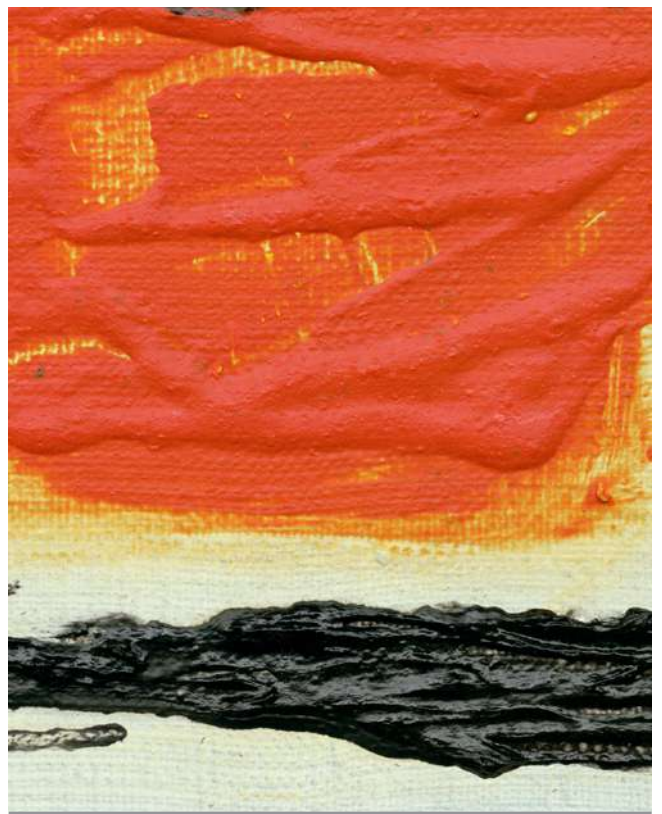


Top image: Badly prepped watercolor paper with warping edges  
Bottom image: Unedited scan result



Acrylic paint and fineliner added to a digital image printed on canvas.

- Scanning details**
- 600 dpi
  - Left lamp up, right lamp down
  - 3D effect at +100



Acrylic on canvas.

- Scanning details**
- 600 dpi
  - Both lamps up
  - 3D effect at +100

## Digitized originals

# VARIOUS MATERIALS AND SURFACES

HD Apeiron/42 lets you position the lamps so that scans of uneven surfaces, such as textile or embossed paper, get an instant lifelike texture sensation.

If that is not enough, you can enable the 3D effect for an even more powerful expression.

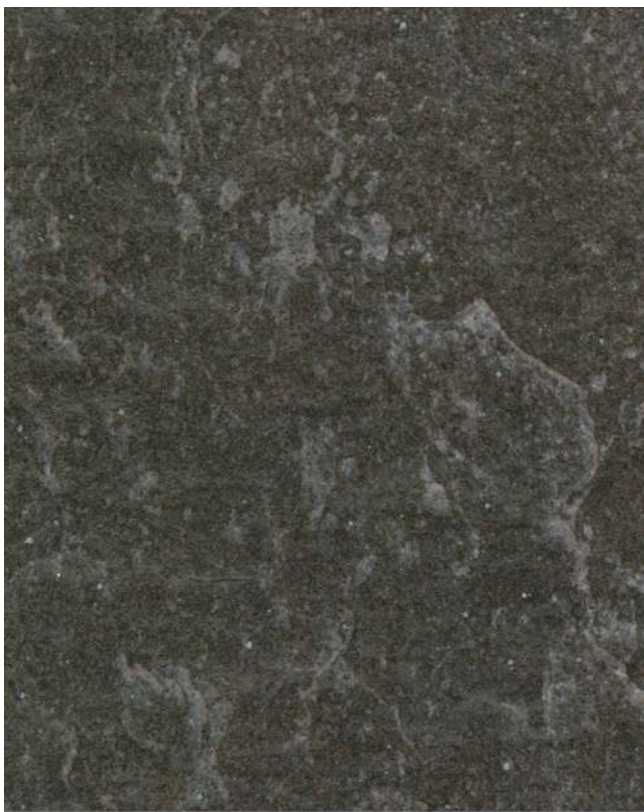
You can utilize the four distinct lamp positions to experiment and determine the optimal combination for successful scanning of shiny originals.



Vintage gobelin upholstery fabric.

### Scanning details

- Quality (multiple exposures)
- 600 dpi
- Both lamps up
- Left: 3D effect at +60
- Right: 3D effect at +100



Slate tile.

### Scanning details

- 600 dpi
- Left lamp up, right lamp down



Vinyl tile.

### Scanning details

- 600 dpi
- Left lamp up, right lamp down



Slightly embossed wallpaper with a subtle shine.

**Scanning details**

- 600 dpi
- Both lamps down

- Left: 3D effect at 0
- Middle: 3D effect at +50
- Right: 3D effect at +100



Silver and gold porcelain dish.

**Scanning details**

- 300 dpi

- Left: Both lamps up
- Middle: Left lamp up, right lamp down
- Right: Both lamps down

User-friendly dedicated software

# TAILORED FOR YOUR EASE OF OPERATION

**The software for HD Apeiron/42 is built on Nextimage, our award-winning software known for its complete set of tools, filters and automated processes for scanning large format documents.**

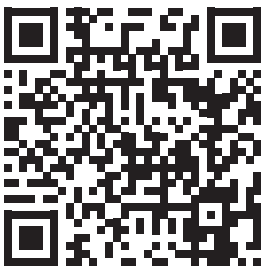
The result, Nextimage Apeiron, heightens the user-friendliness together with the adjustable touchscreen of HD Apeiron/42. The software aptly supports the unique way of working when using a contact-free scanner.

Scanning with the highly complex Nextimage Apeiron software is actually quite simple:

1. Choose a preset
2. Position the focus plane to fit the height of the original
3. Scan

Set your levels, colors, and other settings before scanning or adjust them after. Any changes can be saved as a new preset. Another post-scanning option is the 3D effect which lets you emphasize the uniqueness of any surface.

## **HD** Apeiron/42

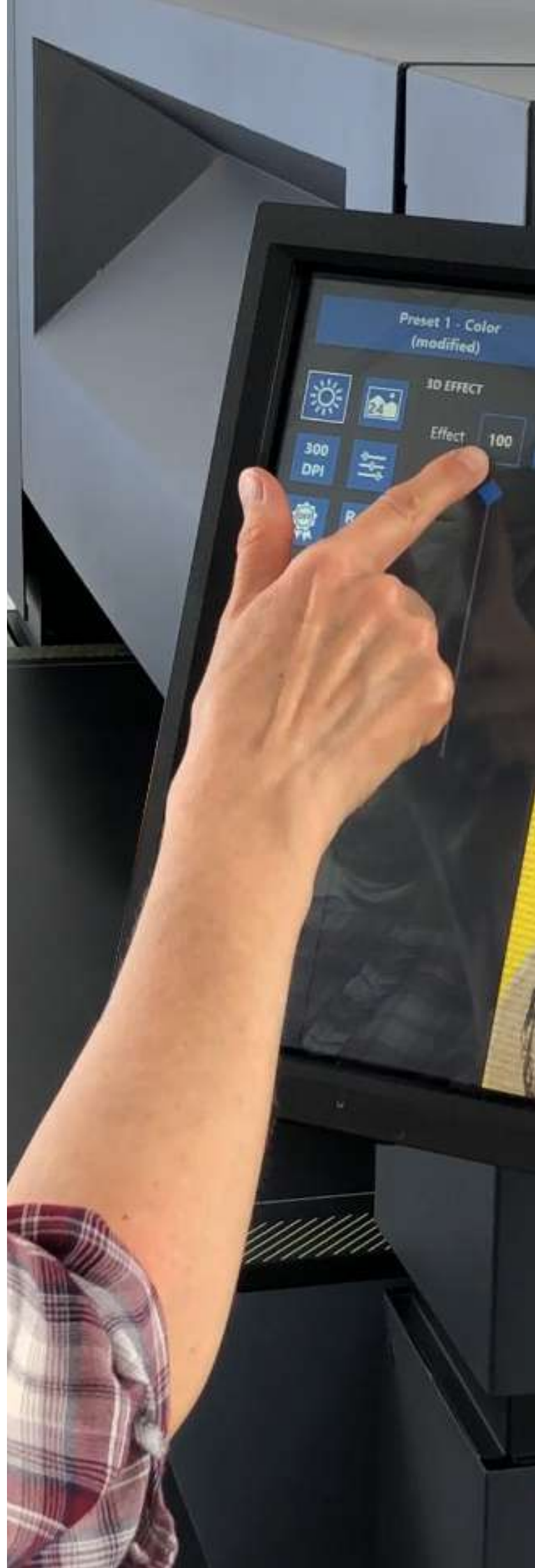


### In-depth presentation

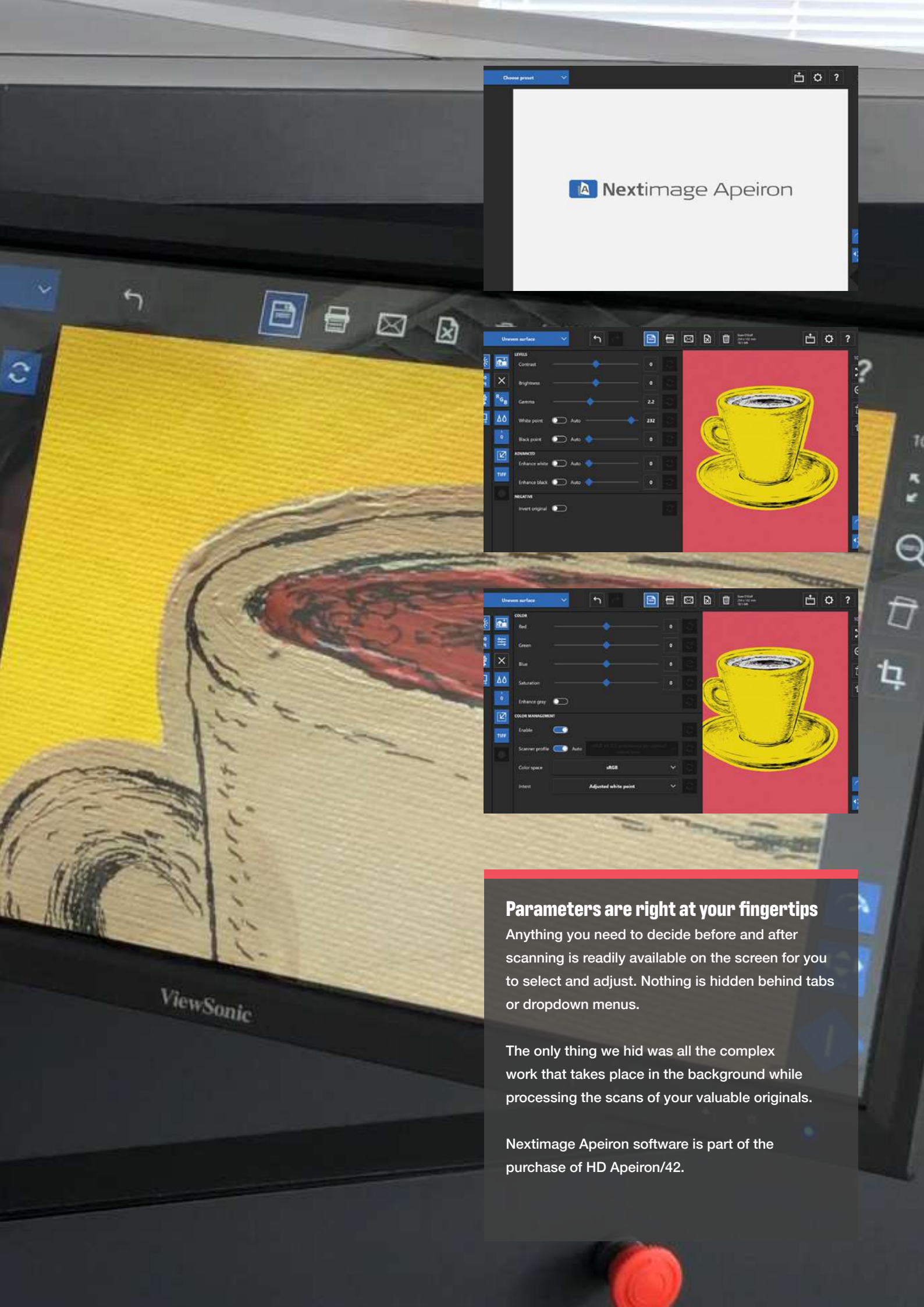
QR: YouTube video



**More on our YouTube channel:**  
[youtube.com/@ContextScanners](https://youtube.com/@ContextScanners)







 Nextimage Apeiron

Unseen surface

LEVELS

Contrast  0

Brightness  0

Gamma  2.2

White point  Auto  232

Black point  Auto  0


ADVANCED

Enhance white  Auto  0

Enhance black  Auto  0

RELATIVE

Invert original



Unseen surface

COLOR

Red  0

Green  0

Blue  0

Saturation  0

Enhance grey


COLOR MANAGEMENT

Enable

Scanner profile  Auto

Color space

Intent



### Parameters are right at your fingertips

Anything you need to decide before and after scanning is readily available on the screen for you to select and adjust. Nothing is hidden behind tabs or dropdown menus.

The only thing we hid was all the complex work that takes place in the background while processing the scans of your valuable originals.

Nextimage Apeiron software is part of the purchase of HD Apeiron/42.

## Hardware technologies

# A WELL-DESIGNED WINNER

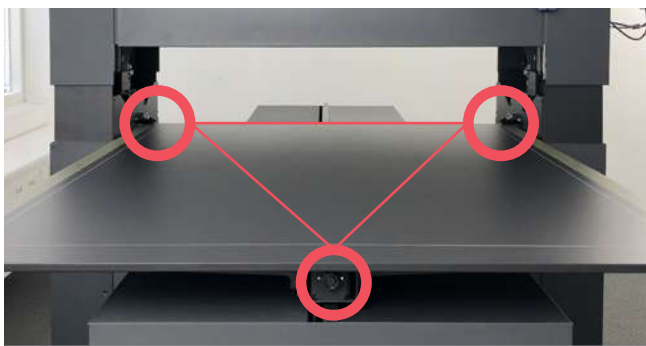
**HD Apeiron/42 is a flexible product that improves existing workflows when digitizing original artwork and artifacts.**

The contact-free scanner uses unparalleled technology to accurately digitize media. It has the market's most realistic image quality, full light control and a unique ability to emphasize details.



### Optimal ergonomics

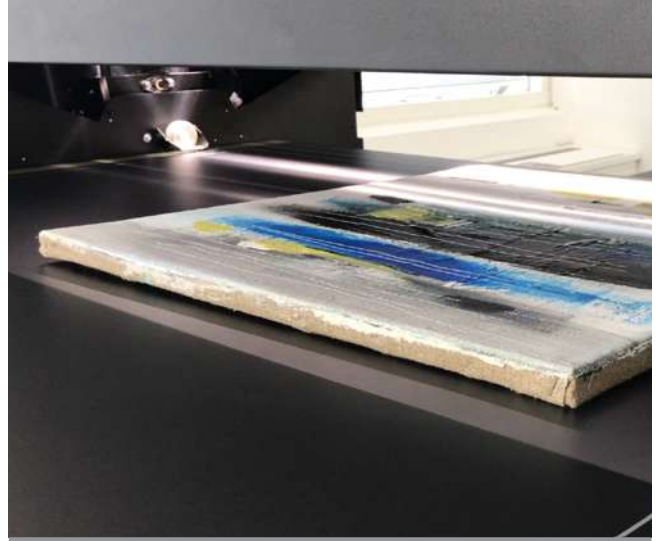
The hardware is designed to support correct ergonomics for the operator; this includes an adjustable arm with a large 22" touchscreen.



### Table conveyance system

The table of HD Apeiron/42 is moved by a precision timing belt transmission. Together with precise and extremely wear resistant PU support rollers on either side of the table and PU rollers tracing the centre rail, this forms a stable triple-point direction control system.

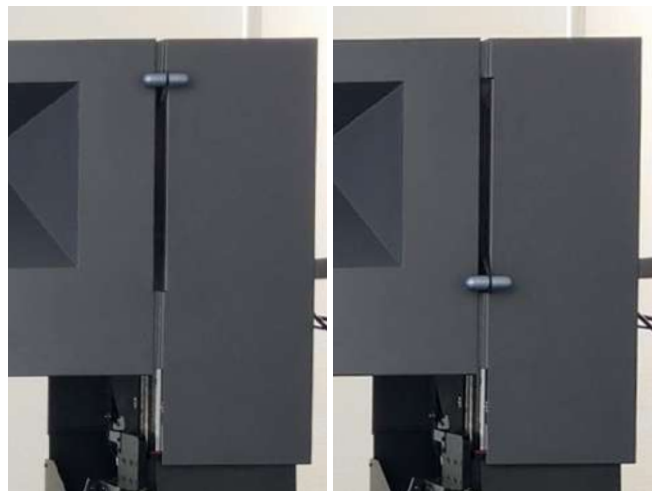
This fully taps into the high precision standards known from other Contex large format scanner solutions.



### Cameras and light

Achieving perfect lighting is crucial for capturing the essence of your artwork. HD Apeiron/42's advanced lighting system recreates the natural daylight spectrum using cutting-edge LEDs with TRI-R™ technology.

The clever design of dual LED strips mounted in two elliptical reflectors guarantees correct and uniform colors with no distance fading. The overall design of the scan module also ensures no ambient light interference.



### Four options for shadows and highlight

A two-position lamp lever on each side of the scan module gives a total of four different lamp positions. This way you can test which light combination is better for successfully scanning your particular type of original.

### Scan thick media

The clearance height of 10 inches (254 mm) and an optimal focus plane of up to 5.1 inches (130 mm) above the table enables scanning of thicker media, such as framed artwork or wood works or samples of building materials.

### 2-person installation

The scanner is designed to be unpacked and moved into the final position without having to call professional movers. The packaging includes both a lifting system and two ramps that mount to the edge of the pallet so that the scanner can easily and safely roll down the ramps.

### Included

Included in the purchase is the HD Apeiron/42 scanner, table, monitor, monitor arm and dedicated Nextimage Apeiron software. Find information about PC (not included) requirements here: [contex.com/hdapeiron](http://contex.com/hdapeiron).

**IQ FLEX – the smaller alternative**

**IQ FLEX**

# VERSATILE CIS FLATBED SCANNER

**As a smaller alternative to HD Apeiron/42, Contex offers IQ FLEX, a flatbed scanner ideal for originals with flat surfaces such as books, textiles, fragile media and artwork.**



## **All-in-one flatbed with flexibilities**

IQ FLEX is easy to use yet incredibly flexible with options for scan to print and book scanning with page split and spine fold elimination. The maximum image area is 19.2x25.2 inches (487x639.6 mm) with an oversize option of up to 25.2x38.4 inches (639.6x974 mm).

The scanner comes complete with a built-in controller and touchscreen the size of a tablet PC. This enables you to operate, edit, annotate and mark-up right from the screen with no need for an extra PC.



**Explore IQ FLEX flatbed scanner:**  
[contex.com/IQFLEX](http://contex.com/IQFLEX)

# HD Apeiron/42



Experience a transformative leap in art digitization with HD Apeiron/42, the pinnacle of contact-free large format art scanning. This remarkable innovation is not just a scanner; it's the key to unlocking unprecedented outcomes for museums, customers, and copy shops alike.

Discover how HD Apeiron/42 redefines art preservation, accessibility, and presentation.

## CONTROL THE LIGHT – CONSERVE THE ART

SEE MORE: [contex.com/hdapeiron](http://contex.com/hdapeiron)



Brought to you by:

### MONOTECH SYSTEMS LIMITED

8B, "Chaitanya Exotica" 24 Venkatnarayana Road, T. Nagar,  
Chennai - 600 017, Tamilnadu, INDIA

Phone: +91 44 2815 7928/7894/7933, 4350 2232, Fax: +91 44 2815 7973

Toll Free (India) : 1 800 102 4567 | email : [info@monotech.in](mailto:info@monotech.in)

[www.monotech.in](http://www.monotech.in)

monotechsystems monotechsystems monotechsystem

