



# Flex-In-One 260 S



**COMPACT.  
CONVENIENT.  
EASY TO USE.**

## All-in-one unit for flexographic plates

Flex-In-One™ is the new generation compact, all-in-one integrated system especially designed to house the entire flexographic platemaking process including exposure, processing, drying and finishing of plate sizes up to 660 x 810 mm (26 x 32"). Ideal for the label/tag and narrow web markets, this product has been fully designed to reflect the market demand focusing on very high quality production of digital flexo plates. It includes many features, such as:

- High UV-A output for the most demanding exposure needs
- 4 rotating brushes for high processing speed
- Solid content measurement device with dosing pump to ensure optimal solvent condition during use
- Insulated dryer drawers for a better temperature uniformity and reduced drying time

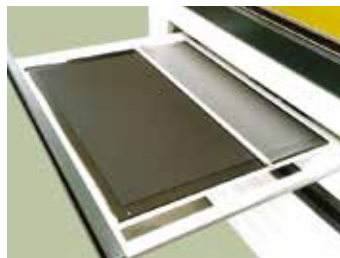
With the Flex-In-One™ 260 S, Glunz & Jensen confirms its leadership in the all-in-one platemaking equipment by offering a product with the best technology for extraordinary results in terms of quality.



▲ Operator friendly colour touch screen with graphic display of all functions, 24 memory channels and PLC control.



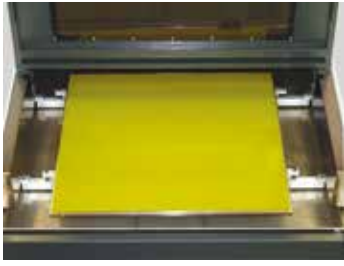
▲ Exposure with 16 high power lamps, optimal airflow for temperature regulation.



▲ Cooled exposure bed for consistent temperature control in exposure section.



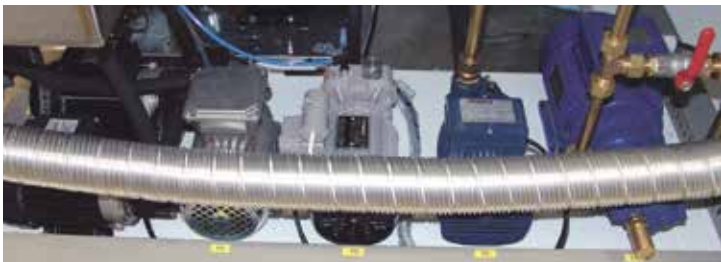
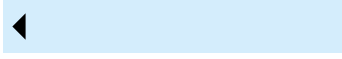
▲ Dryer section includes four insulated drawers with individual timers for fast and consistent drying time.



The processor includes a self-adhesive holder for positioning the plate, integrated heating and cooling device for solvent temperature control and automatic replenishment.



Exposure lamps feature automatic detection of defective lamps, temperature regulation, working hours counter and easy access for replacement.



Separate pumps, pneumatic valves and solid content measurement device with dosing pump allows the user to benefit from better solvent condition during use.



Post-exposure and Light Finisher use UV-A and UV-C lamps with electronic ballast, fibre optic detection system for defective lamps and an integrated solvent fume extraction system



## Technical Specifications

MODEL	Flex-In-One 260 S
<b>PERFORMANCE</b>	
Plate Types	Solvent flexo plates
Plate Size (max)	660 x 810 mm (26 x 32")
<b>CONSUMPTION</b>	
Power Consumption	10000 W
Power Supply	3W+N+PE, 400 VAC 3W+PE, 230 VAC
Air Extraction	Processor: 300 m <sup>3</sup> /hr Dryer: 100 m <sup>3</sup> /hr Light Finisher: 300 m <sup>3</sup> /hr
Exhaust Connection	Processor: 100 mm (3,94") Dryer: 60 mm (2.36") Light Finisher: 100 mm (3,94")
Compressed Air	8-10 bar (87-145 psi)
<b>GENERAL</b>	
Dimensions, unit (WxLxH)	2300 x1670 x 1250 mm (90.6 x 65.8 x 49.2")
Weight, unit	1000 kg (2205 lbs)
Dimensions, crate (WxLxH)	2470 x 1870 x 1550 mm (97.2 x 73.6 x 61.0")
Weight, unit + crate	1260 kg (2778 lbs)
<b>TANK CAPACITIES</b>	
Main solvent tank	65 ltrs (17.2 US gal)

Marketed and Distributed By :

### MONOTECH SYSTEMS LIMITED

III Floor, City Centre, No. 66, Thirumalai Road, T. Nagar, Chennai 600 017, INDIA

Phone + 91 44 2815 7928 / 7894 / 7933, Fax + 91 44 2815 7973

Email : info@monotech.in web : www.monotech.in

monotechsystems 
 monotechsystems 
 monotechsystem

